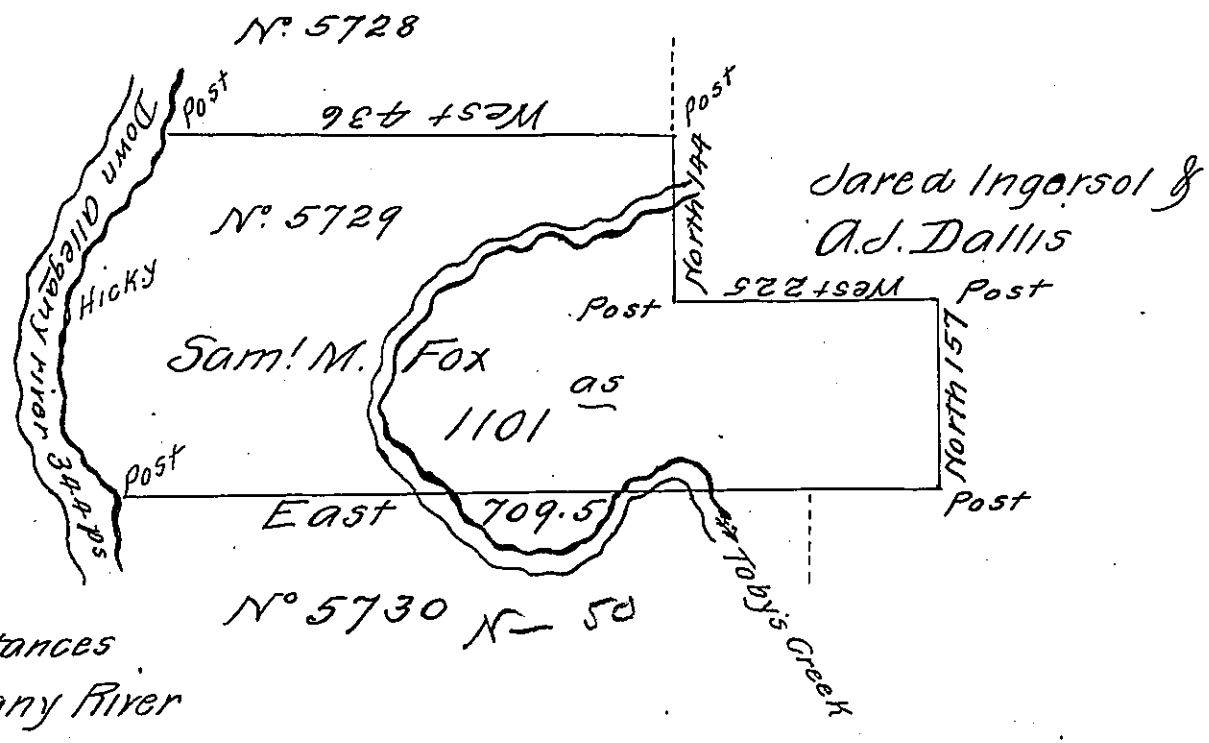


Called "Wee, shaw, hop kee"



Courses and distances down the Allegany River from Post to Post.

- S. 33W - 142 ps
- S. 24W - 31 Hicky
- S. 11W - 48
- S. 4E - 46
- S. 38E - 77
- 344

In Pursuance of a Warrant dated 31<sup>st</sup> December 1794 N° 5729  
 Surveyed Nov<sup>r</sup> 12<sup>th</sup> 1795 To Saml M. Fox The above described  
 tract of Land Situate in the Late Purchase Lycoming County in  
 District N° 6 Containing Eleven hundred and one acre and  
 Allowance of Six p<sup>r</sup> Cent

p In<sup>o</sup> Brodhead D.S.

Daniel Brodhead Esq<sup>t</sup>  
 Surveyor General

IN TESTIMONY that the above is a copy of the original remaining on file in  
 the Department of Internal Affairs of Pennsylvania, made  
 conformably to an Act of Assembly approved the 16th day of  
 February, 1833, I have hereunto set my Hand and caused  
 the Seal of said Department to be affixed at Harrisburg,  
 this Second day of August 1911

*Henry Howck,*  
 Secretary of Internal Affairs.